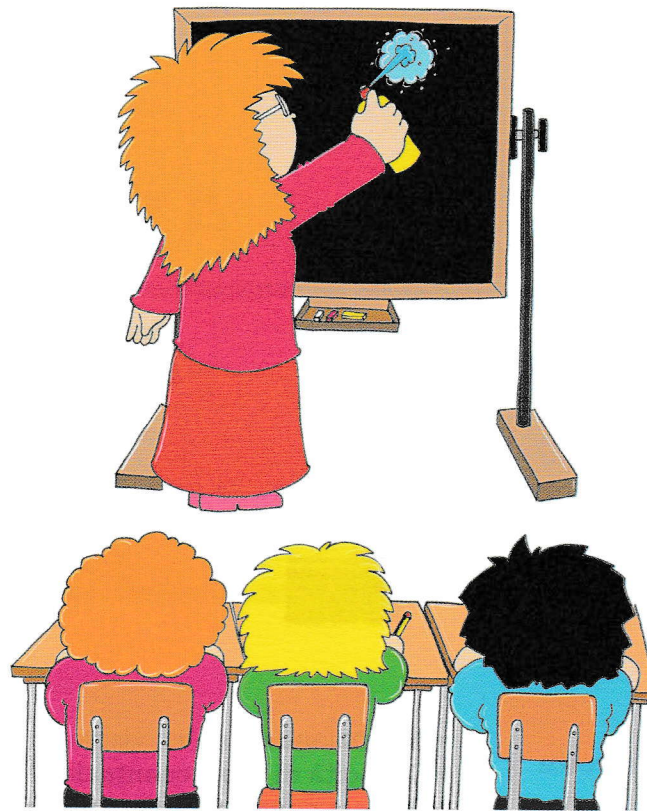


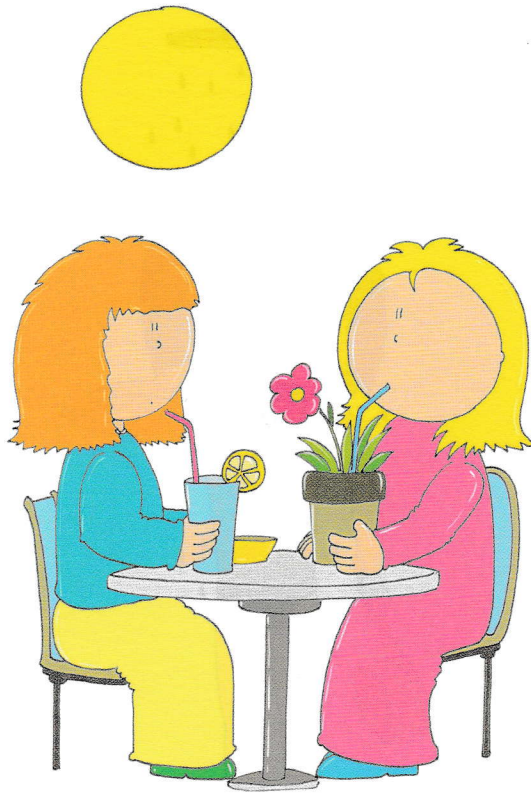
A



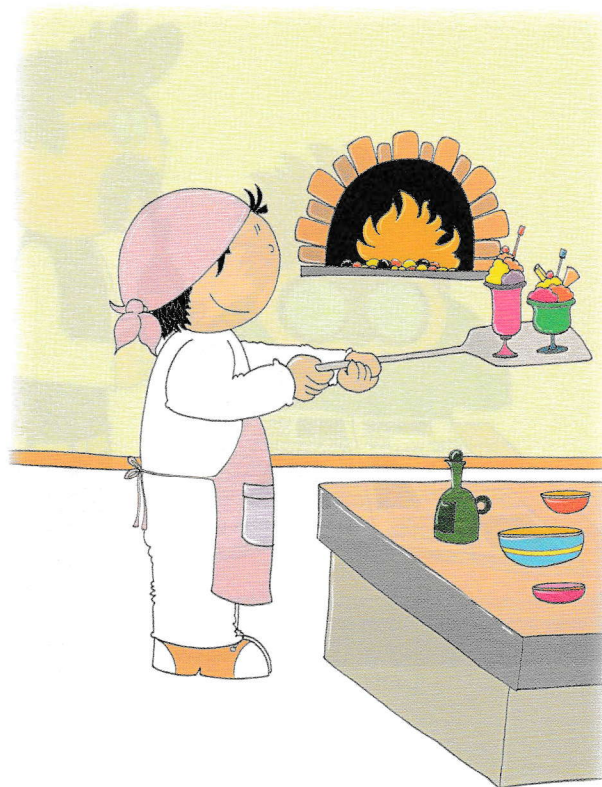
B



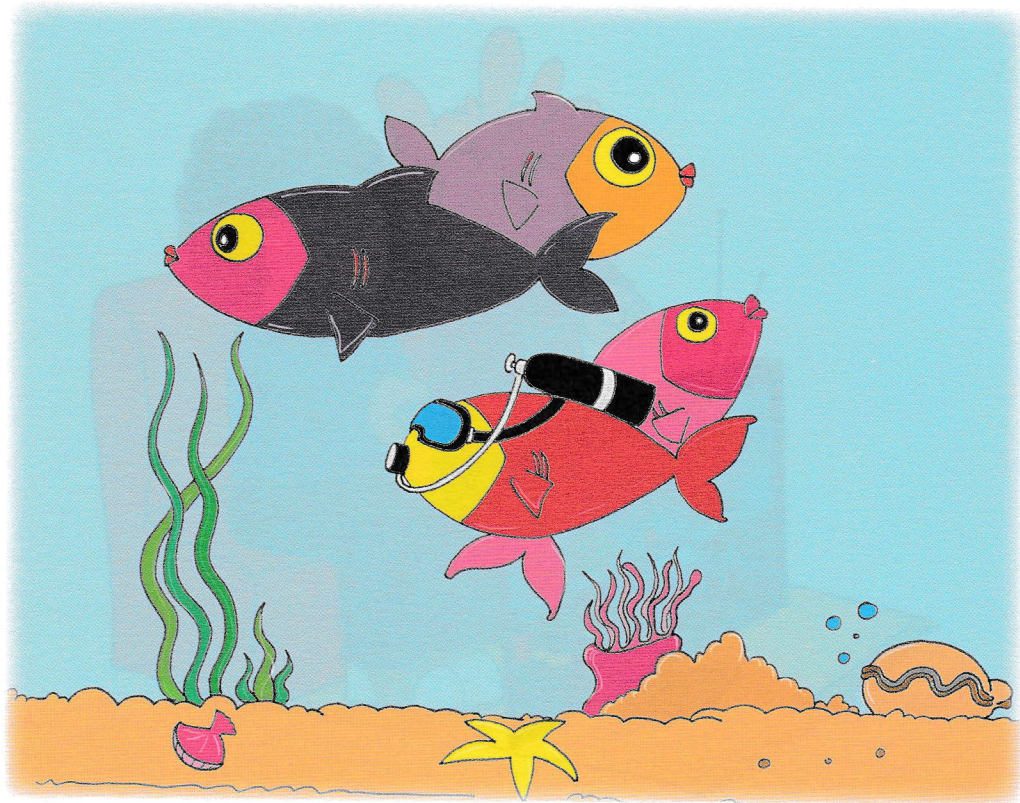
A



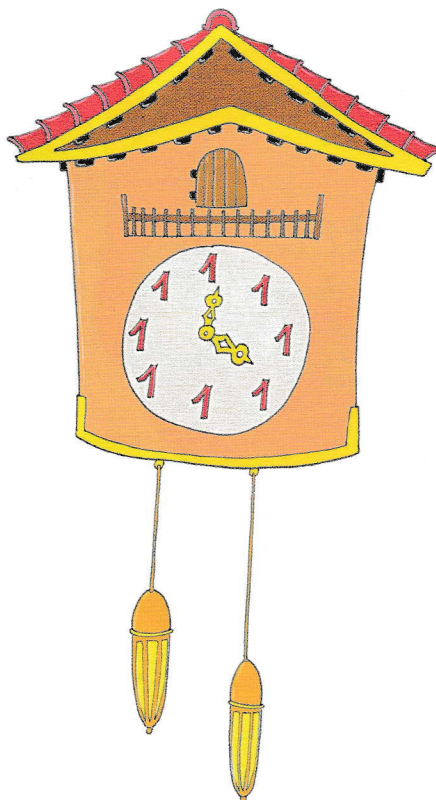
B



A



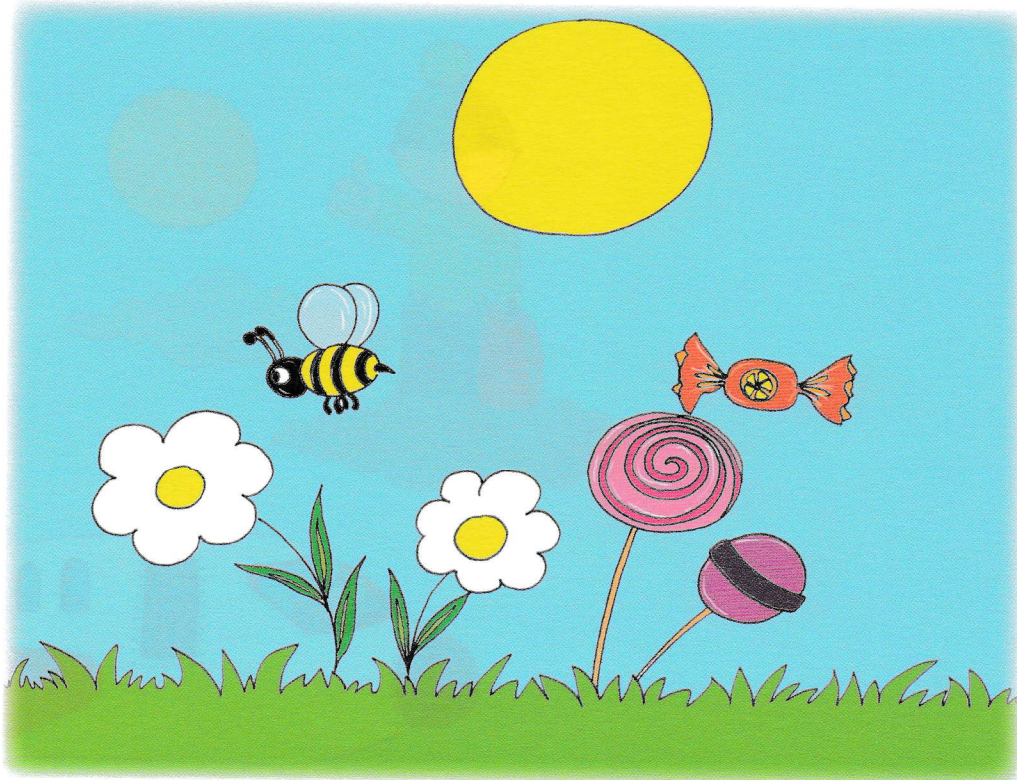
B



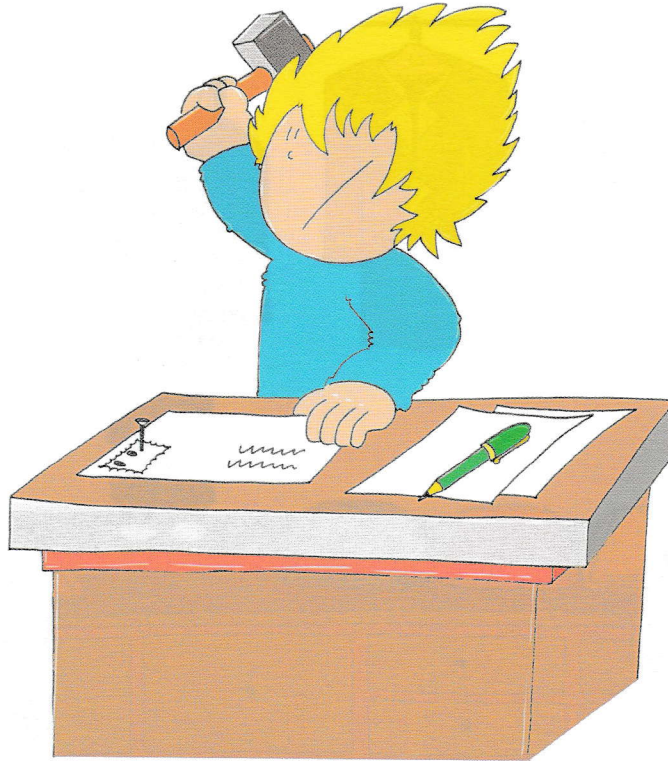
A



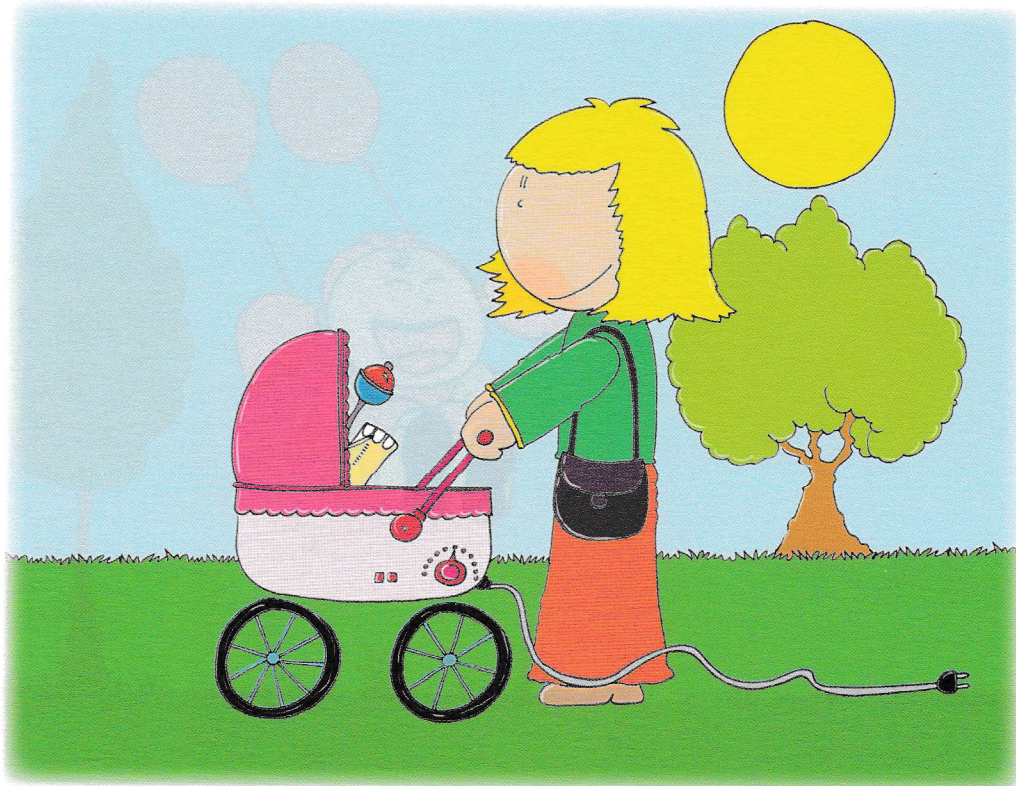
B



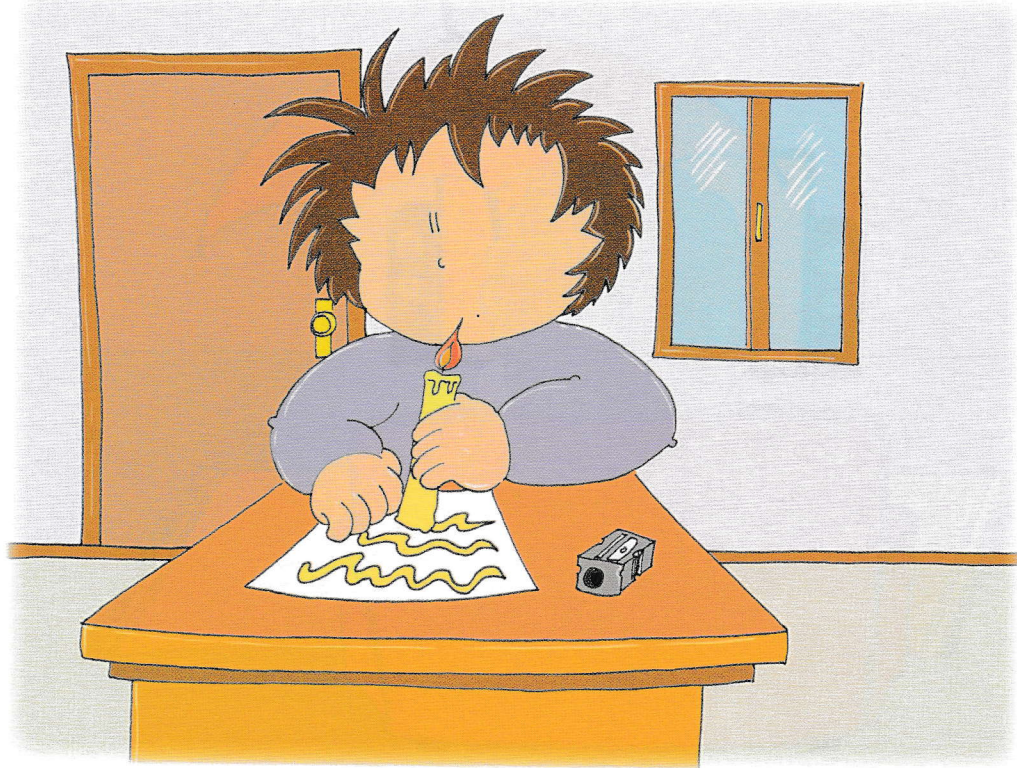
A



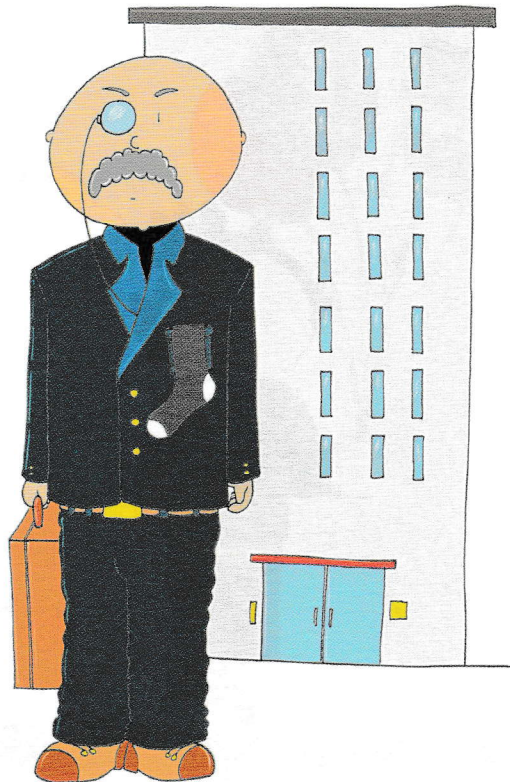
B



A



B



A



B



A

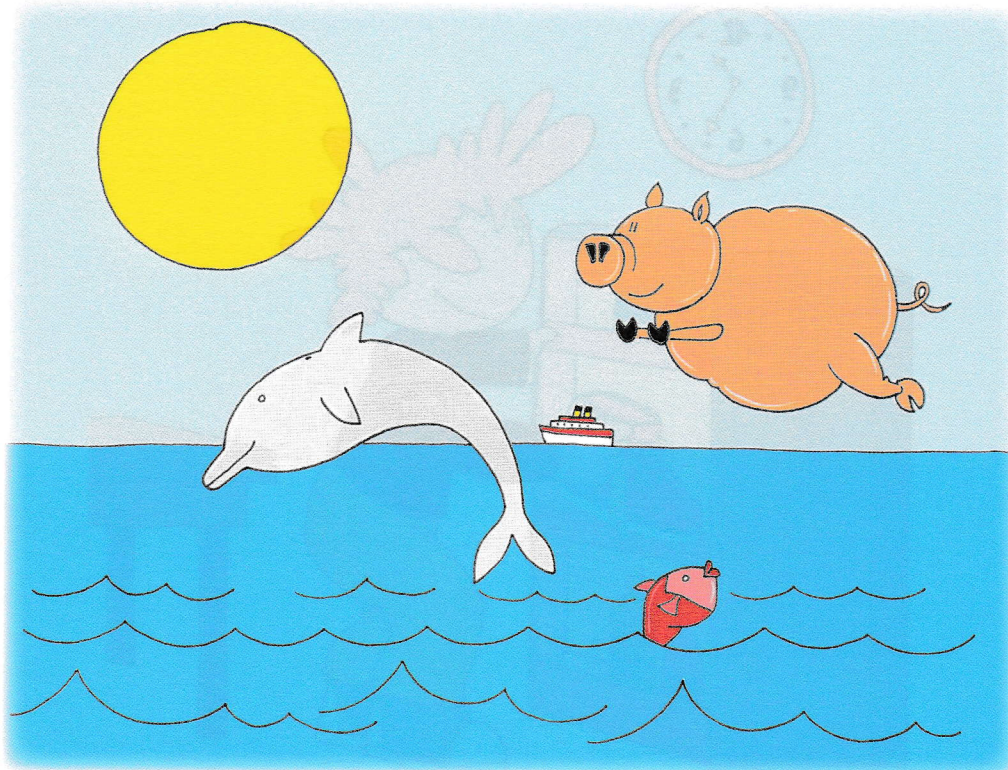


B





A



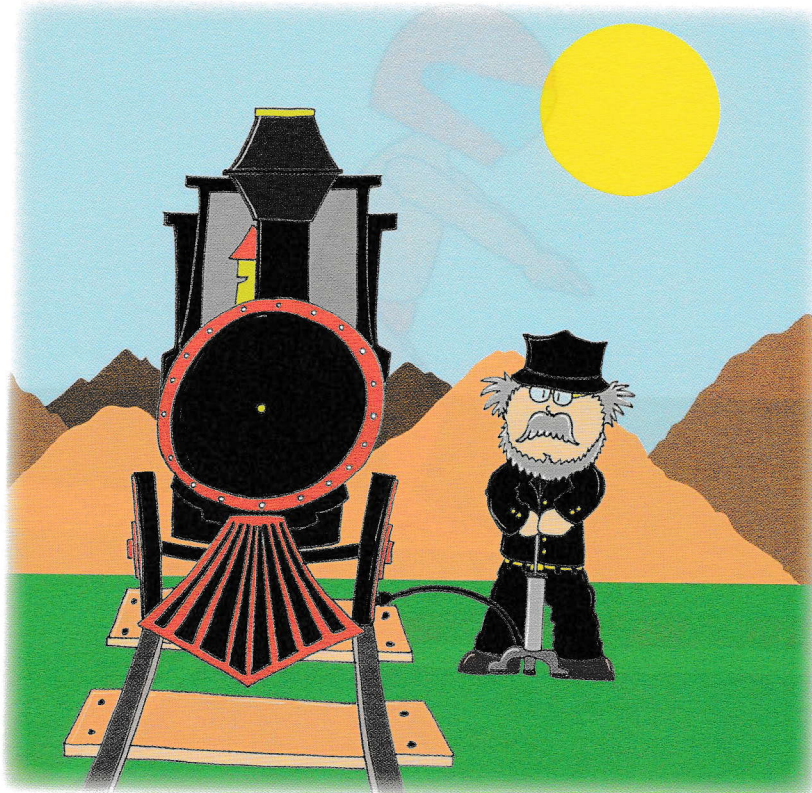
B



A



B



Item	Risposta	Punti	Tempo di esecuzione	Osservazione comportamentale
8	A Bambino appeso			
	B Palloncini			
9	A Chiodi e martello			
	B Filo elettrico			
10	A Ombrello			
	B Sedia			
11	A Candela			
	B Calzino			
12	A Barca			
	B Ruota quadrata			
13	A Pallina da tennis			
	B Spazzolino			
14	A Mela			
	B Uccellino			
15	A Salame			
	B Forchetta			
16	A Scarpa			
	B Padelle			
17	A Matalino			
	B Banane, pere e mele sullo stesso albero			

